

Nahant's Stormwater Management Program Board of Selectmen Meeting August 14, 2003



Fay, Spofford & Thorndike

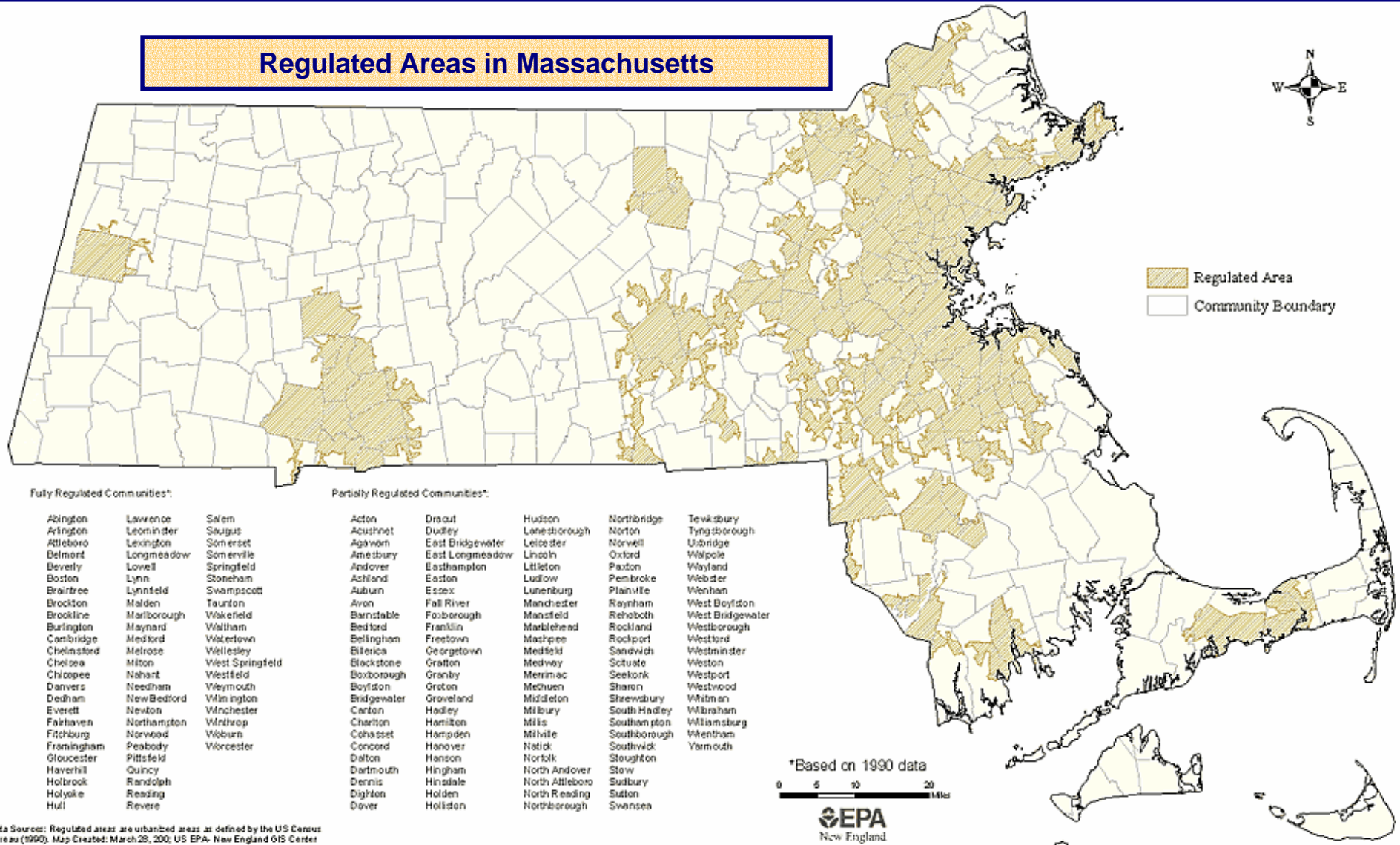


EPA'S NPDES STORMWATER PROGRAM

- Phase I - regulated separate storm drain systems in medium and large cities, industries and construction sites >5 ac.
- Phase II - regulates separate storm drain systems in small urbanized areas and construction sites > 1 ac.

Who is Covered?

Regulated Areas in Massachusetts



Fully Regulated Communities*

Arlington	Lawrence	Salem
Arlington	Leominster	Saugus
Attleboro	Lexington	Somerset
Belmont	Longmeadow	Somerville
Beverly	Lowell	Springfield
Boston	Lynn	Stoneham
Braintree	Lynnfield	Swampscott
Brookline	Malden	Taunton
Burlington	Marlborough	Warefield
Carroll	Maynard	Waltham
Chelmsford	Medford	Watertown
Chelsea	Melrose	Wellesley
Chicopee	Milton	West Springfield
Danvers	Nahant	Westfield
Dorham	Needham	Weymouth
Everett	New Bedford	Wilmington
Fairhaven	Newton	Winchester
Framingham	Northampton	Wintrop
Gloucester	Northwood	Woburn
Haverhill	Peabody	Worcester
Holbrook	Pittsfield	
Holyoke	Quincy	
Hull	Randolph	
	Reading	
	Revere	

Partially Regulated Communities*

Acton	Draught	Hudson	Northbridge	Tewksbury
Acushnet	Dudley	Laneborough	Norton	Tyngborough
Agawam	East Bridgewater	Leicester	Norwell	Uxbridge
Amesbury	East Longmeadow	Litchfield	Oxford	Walpole
Andover	Easthampton	Littleton	Paxton	Wayland
Ashland	Easton	Ludlow	Pembroke	Webster
Auburn	Essex	Lunenburg	Plainville	Wenham
Avon	Fall River	Mandeville	Raynham	West Boylston
Barnstable	Foxborough	Mansfield	Rehoboth	West Bridgewater
Bedford	Franklin	Marblehead	Rockland	Westborough
Bellingham	Freetown	Mashpee	Rockport	Westford
Billerica	Georgetown	Medfield	Sandwich	Westminster
Blackstone	Granton	Medway	Schuette	Weston
Boxborough	Granby	Merimac	Seekonk	Westport
Boylston	Groton	Methuen	Sharon	Westwood
Bridgewater	Groveland	Middleton	Shrewsbury	Whitman
Carlton	Hadley	Milbury	South Hadley	Williamson
Charlton	Hamilton	Mills	Southampton	Williamburg
Chatham	Hampden	Milville	Southborough	Wenham
Concord	Hampover	Natick	Southwick	Yarmouth
Dalton	Hanson	Norfolk	Stoughton	
Dartmouth	Hingham	North Andover	Stow	
Dennis	Hinsdale	North Attleboro	Sudbury	
Dighton	Holden	North Reading	Sutton	
Dover	Holliston	Northborough	Swansea	

Data Source: Regulated areas are unincorporated areas as defined by the US Census Bureau (1990). Map Created: March 28, 200; US EPA- New England GIS Center
 \projects\atm\wate\mair\dig.mxd





GOALS OF PHASE II

- Reduce Pollutants to Maximum Extent Practicable
- Protect Water Quality
- Meet Clean Water Act Requirements



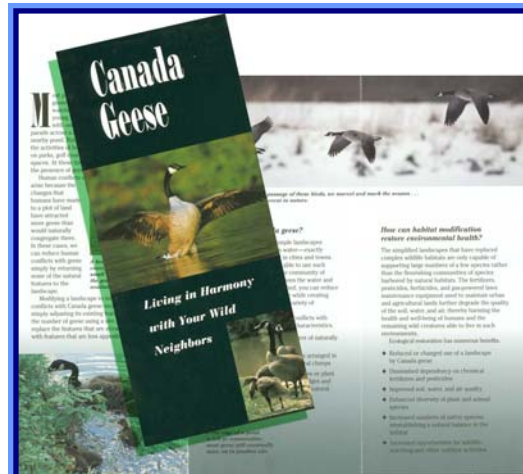
Permitting Requirements

- Develop a Stormwater Management Program (SWMP)
 - Six Minimum Control Measures
 - Best Management Practices for Each Control Measure
 - Measurable Goals
- Filed Notice of Intent for Coverage on July 30, 2003
 - Summary of BMP's & Measurable Goals
- Annual Report



Six Minimum Control Measures

1. Public Education and Outreach
2. Public Involvement/Participation





Six Minimum Control Measures (cont'd)



3. Illicit Detection & Elimination



4. Construction Site Stormwater Runoff Control





Six Minimum Control Measures (cont'd)

5. Post-Construction Stormwater Management in New Development & Redevelopment



6. Pollution Prevention/Good Housekeeping for Municipal Operations



Development of SWMP

- Self Assessment
 - Responsibility
 - Mapping
 - Current Practices
 - Current Regulations
 - Civic Organizations
 - Identify Stormwater Concerns
 - Funding Sources





Nahant's SWMP

- Public Education & Outreach
 - Stormwater Information on Web Site
 - Annual HHW Collection Day
 - Pet Waste Management Campaign
 - Stormwater Education for Local Businesses
 - Promote Water Conservation
 - Metal Recycling Day Events





Nahant's SWMP



- Public Involvement & Participation
 - Public Review of SWMP
 - Public Review of Annual Report
 - Provide Support to Local Cleanup Activities



Nahant's SWMP (cont'd)

- Illicit Discharge Detection & Elimination
 - Storm Drainage System Map
 - Illicit Discharge Detection & Elimination Bylaw
 - IDDEP
 - Storm Drain Stenciling Program





Nahant's SWMP (cont'd)

- Construction Site Stormwater Runoff Control
 - Erosion & Sedimentation Control Bylaw
 - Construction Site Inspection & Inspection Form
 - Citizen Complaint Hotline



Nahant's SWMP (cont'd)

- Post Construction Stormwater Mgmt in New Development & Redevelopment
 - Bylaw Governing Post Construction Stormwater Management of New Development & Redevelopment



Nahant's SWMP (cont'd)

- **Municipal Good Housekeeping**
 - Training Program
 - Catch Basin Cleaning Program
 - Parking Lot & Street Sweeping Program
 - Vehicle & Equipment Maintenance
 - Vehicle & Equipment Cleaning
 - Landscaping/Lawn Care



Nahant's SWMP (cont'd)

- Municipal Good Housekeeping (cont'd)
 - Formalize the Bear Pond/Golf Course Drainage Maintenance Program





Nahant's SWMP (cont'd)

- Municipal Good Housekeeping (cont'd)
 - Develop & Implement a Spill Prevention & Response (SPRP) for the DPW Facility





Nahant's SWMP (cont'd)

- Municipal Good Housekeeping (cont'd)
 - Apply for a CPR Grant to Fund the Proposed Pollution Remediation Nahant Thicket Project





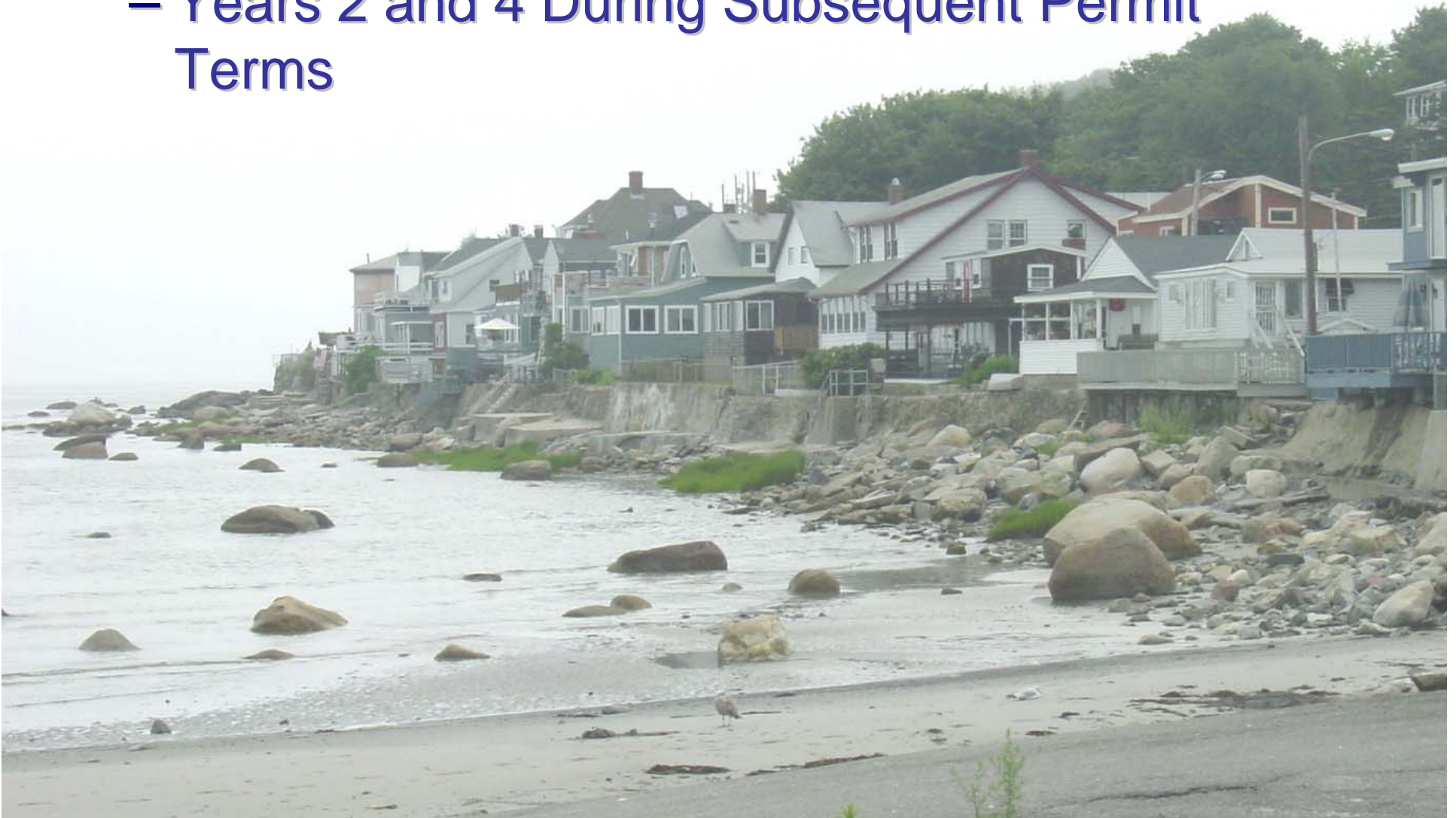
Next Step

- Obtain Coverage under EPA's General Permit
 - NOI filed on July 30, 2003
- Finalize SWMP based on public input
- Implement BMP's identified in SWMP

- Reporting Requirements

- Annually During 1st Permit Term

- Years 2 and 4 During Subsequent Permit Terms





Questions?